

Feasibility Analysis of Caller Prediction

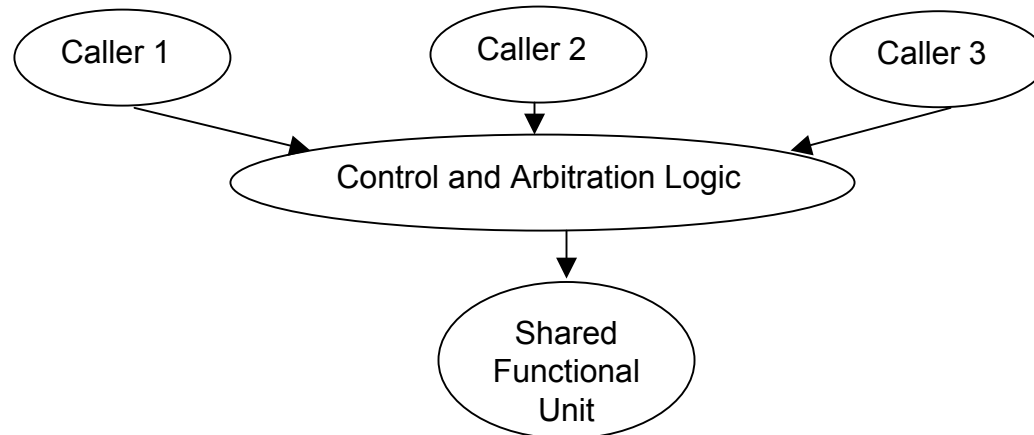


Newton Petersen
Martin Wojcik

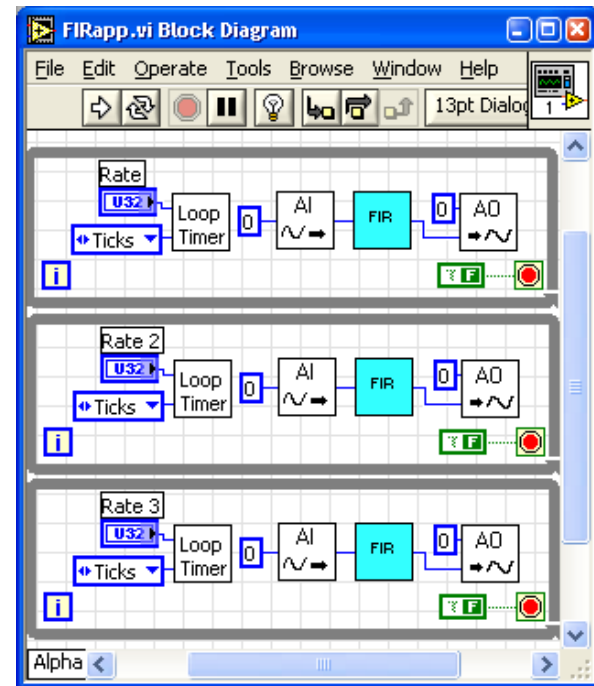


Caller Prediction

- Predict caller of shared functional units
 - Dedicated hardware
 - Parallel execution
- Prefetch instance state data – Nothing new
- Build on branch prediction
- Mechanism built into dynamic scheduler



- G (LabVIEW)
- Process Networks
- Dynamic Dataflow
- Boolean Dataflow





Applications

- Not hard real time
- Mixed systems
 - Modem carrier recovery and modulation filters
- Varying quality of service
 - Video or audio playback
 - Data compression
 - Speech recognition
- Fast-settling dynamic schedules
 - Measurement Systems