

THE UNIVERSITY OF TEXAS AT AUSTIN

COMPUTATIONAL SENSING AND IMAGING LAB

The CSI Lab seeks highly motivated **prospective PhD students** and **post-docs** in electrical/biomedical engineering starting in Fall 2020. In particular, we seek people who enjoy working on image reconstruction development, pulse sequence design, optimization, deep learning, high performance computing, system hardware, and clinical deployment.

The CSI Lab @ UT Austin

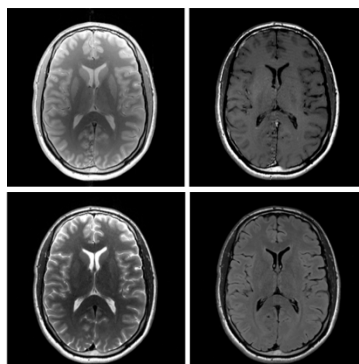
We focus on the joint design of computational sensing systems and software algorithms, with primary application to magnetic resonance imaging. Located in the brand-new, state-of-the-art Engineering Education & Research Center, the CSI Lab is part of an interdisciplinary team of research scientists, engineers, and clinicians, and is closely affiliated with the **UT Biomedical Imaging Center** and the **UT Dell Medical School**. Positioned at the nexus of biomedical and engineering innovation, we are passionate about tackling real-world challenges through the lens of computational sensing and imaging.

Engineering Education & Research Center

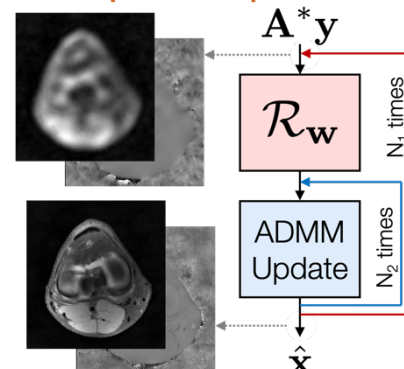


Source: <https://capitalplanning.utexas.edu>

Fast multi-contrast imaging



Deep inverse problems



- > **Please send an email with a CV and short statement of interests**
- > **Prospective students should also apply directly to UT ECE by Dec. 15, 2019**
www.ece.utexas.edu/graduate/admissions

Contact:

Jon Tamir, PhD
 Assistant Professor, Electrical and Computer Engineering
 The University of Texas at Austin
jtamir@utexas.edu



www.jtsense.com

The University of Texas at Austin is committed to an educational and working environment that provides equal opportunity to all members of the university community.