

If you mess up the board such that the debugger cannot find it, you can try to unlock the debugger
“Could not initialize target device! Please power cycle the board and try again.”
“Error: Flash download failed – Target DLL has been cancelled.”

1) Download and install the Stellaris LM Flash Programmer <http://www.ti.com/tool/lmflashprogrammer>

2) Plug in your Stellaris LM3Sxxx board (uVision C should not be open)



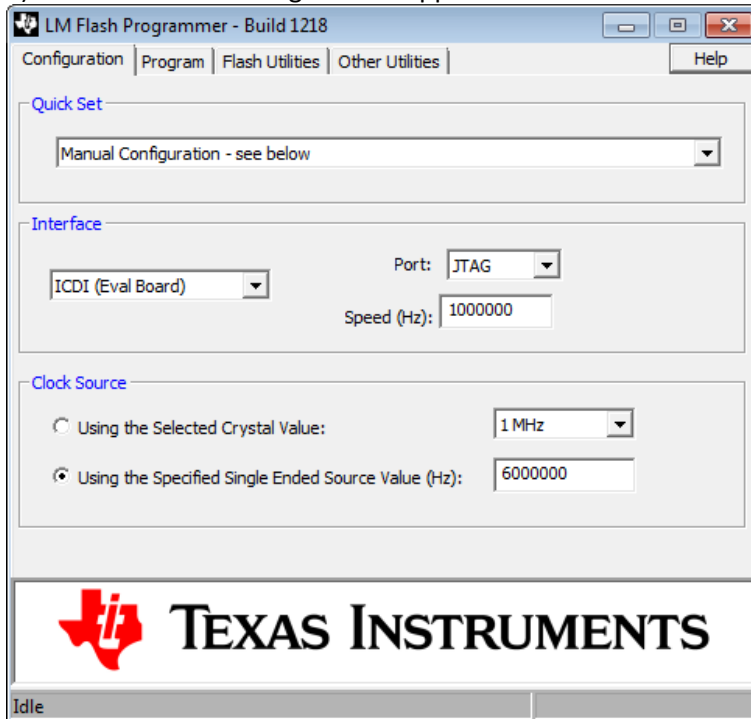
Perform these three steps if you are flashing a target board like the EE445L Lab 8-9-11 PCB. The LM3S1968 will be the debugger (red light comes on).

- A) Connect the JTAG cable between your target and LM3S1968 (red line is pin 1)
- B) Power the target board separately (there are no power connections in the JTAG connector).
- C) Connect the USB cable from LM3S1968 and the PC

Perform these three steps if you are flashing the LM3S2110 board that comes in the EKK-LM3S8962 kit. The LM3S8962 will be the debugger (red light comes on).

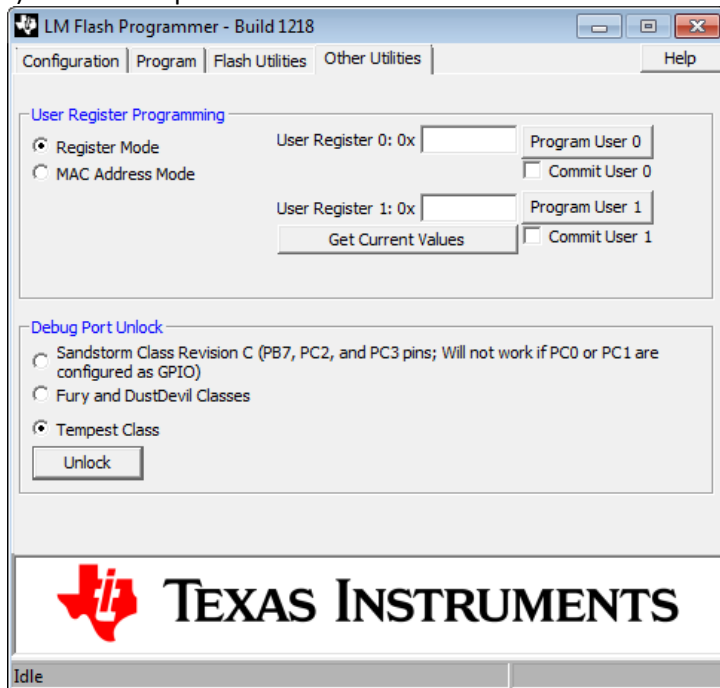
- A) Connect the JTAG between LM3S2110 and LM3S8962 boards (red line is pin 1)
- B) Connect the CAN cable between LM3S2110 and LM3S8962 (there are no power connections in the JTAG connector, but there is power in the CAN cable).
- C) Connect the USB cable from LM3S8962 and the PC

3) Run the LM Flash Programmer application

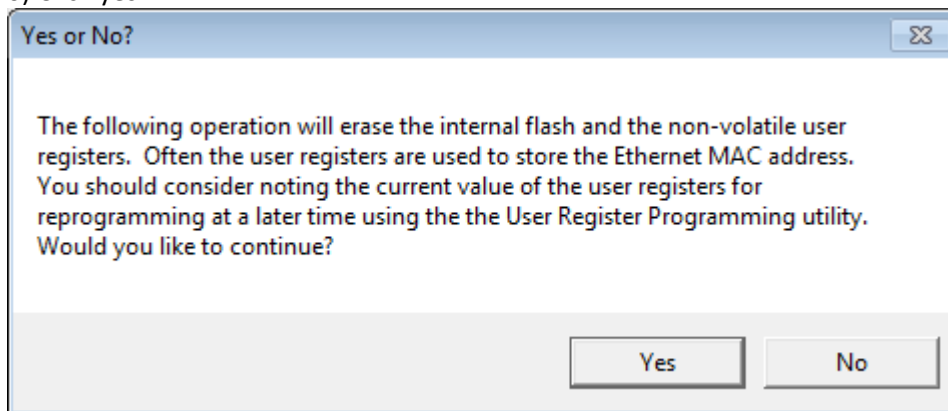


4) Click Other Utilities TAB

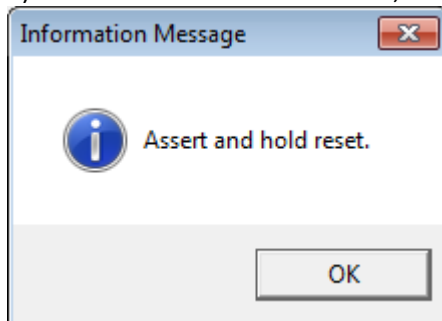
5) Select “Tempest Class” and Click “Unlock”



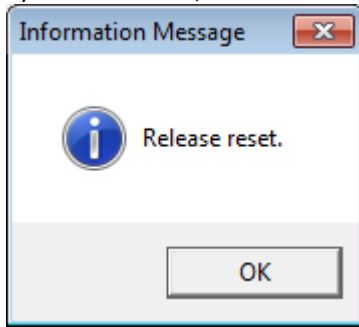
6) Click yes



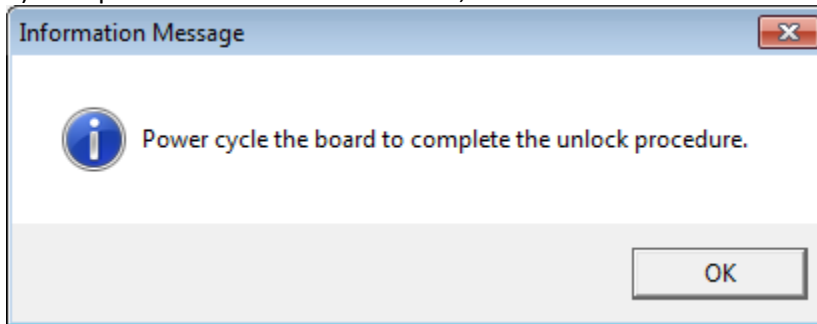
7) Press and hold reset on board, then click OK



8) Release reset, then click OK



9) Turn power on and off to the board, then click OK



10) Quit Stellaris LM Flash Programmer