

LOC	DIST	REVISIONS				
		P	LTR	DESCRIPTION	DATE	DWN
AG	53		L	REVISED PER ECO-15-006927	17JUN2015	NK
						MM

D

C

B

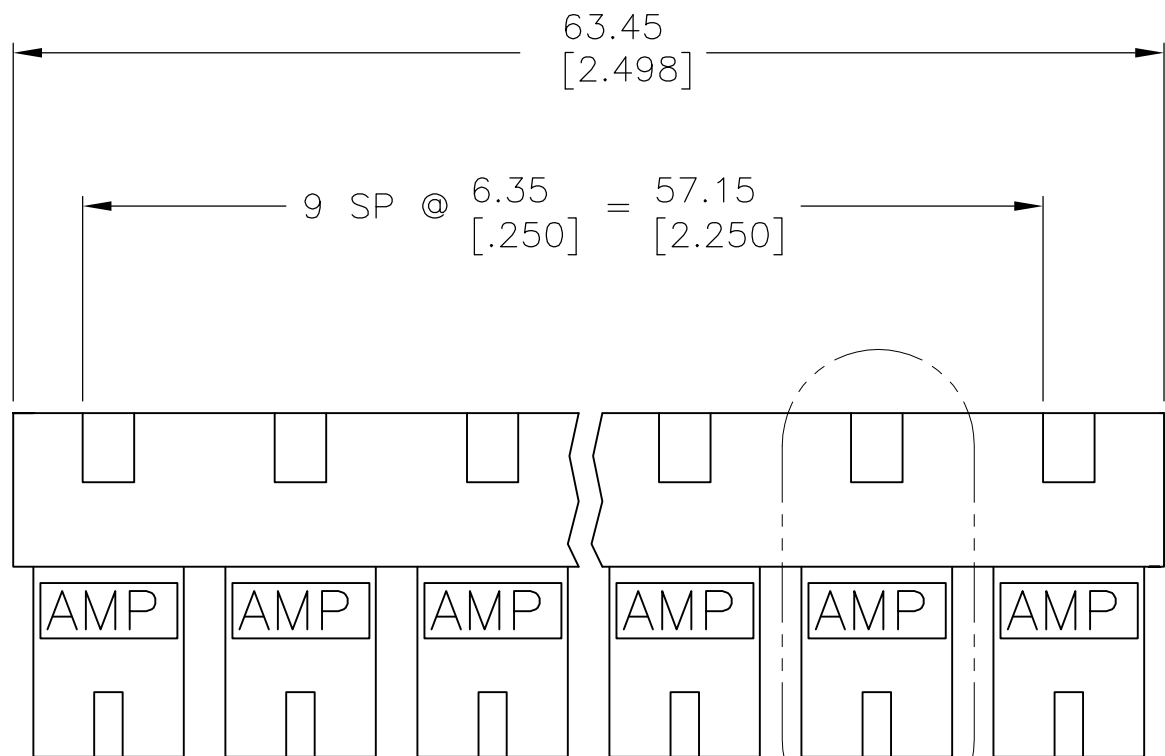
A

D

C

B

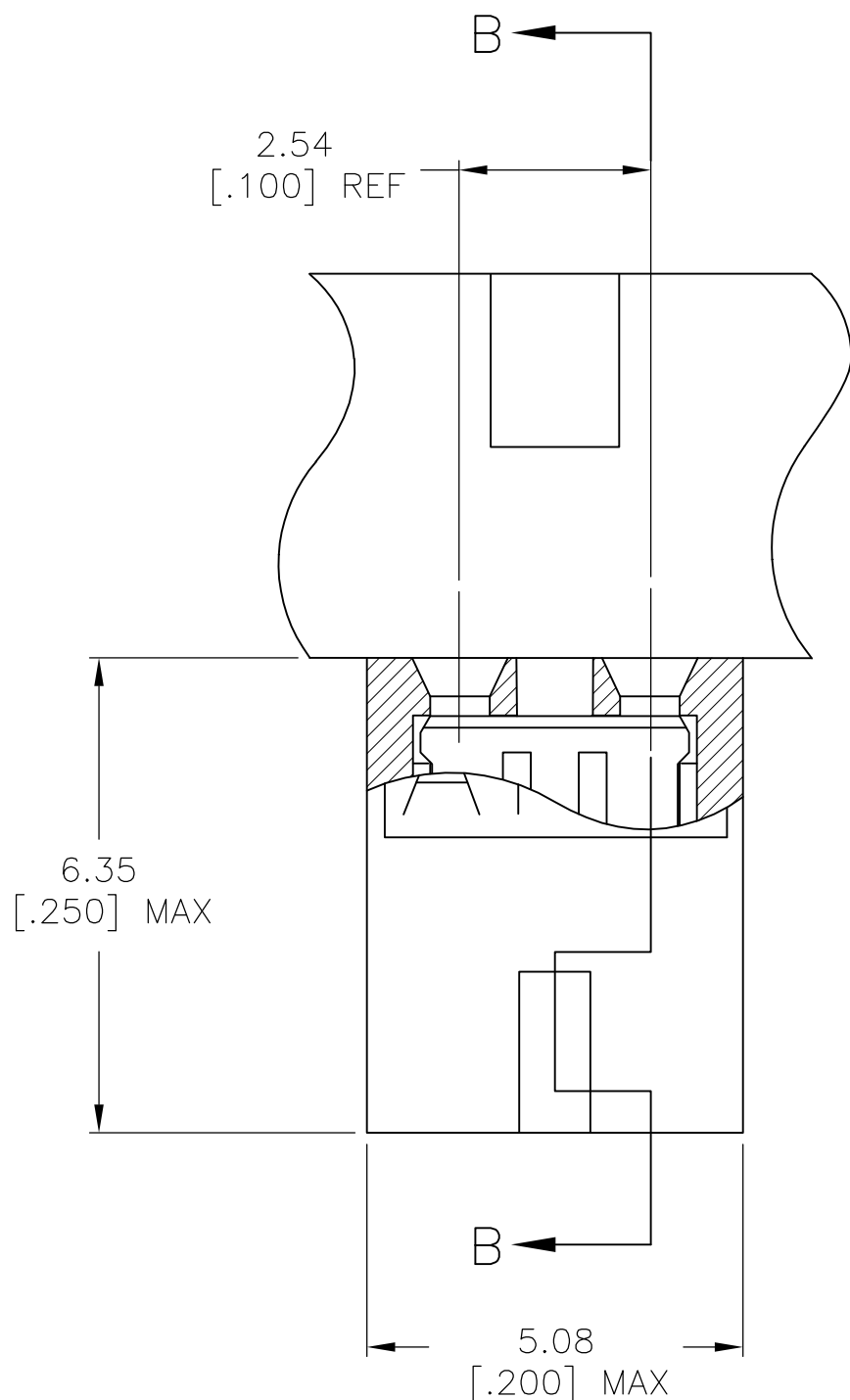
A



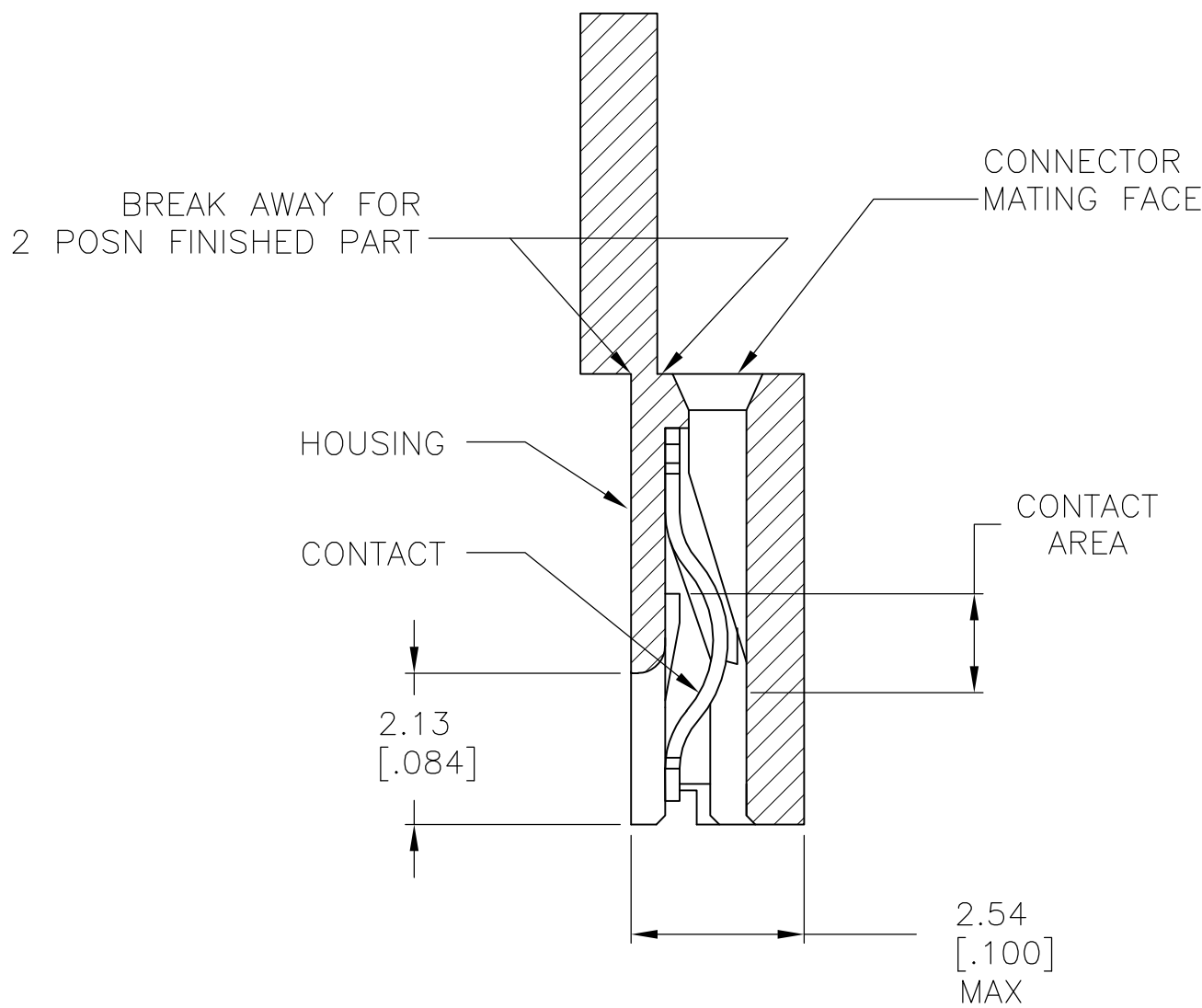
SEE DETAIL A

- 7 PART NO. DENOTES INDIVIDUAL TWO POSITION SHUNT WHICH IS PACKAGED LOOSE PIECE.
- 8 CONTACT PLATED WITH 0.00076[.000030] GOLD IN CONTACT AREA OVER 0.00127[.000050] NICKEL OVERALL.
- 9 CONTACT PLATED WITH 0.00254[.000100] MATTE TIN OVER ALL.

- 1 MATERIAL:
HOUSING: GLASS-FILLED POLYESTER, COLOR-SEE TABLE.
- 2 CONTACT PLATED WITH 0.00254[.000100] TIN-LEAD OVER ALL.
- 3 CONTACT PLATED WITH 0.00038[.000015] GOLD IN CONTACT AREA OVER 0.00127[.000050] NICKEL OVER ALL.
- 4 PART NO. DENOTES INDIVIDUAL TWO POSITION SHUNT, WHICH IS PACKAGED ON BREAKAWAY COMBS OF TEN SHUNTS.
- 5 CONNECTOR MATES WITH WIRE WRAP POSTS, 0.64[.025] SQUARE OR ROUND AND 0.56[.022] X 0.66[.026] POSTS. LENGTH 5.08[.200] MINIMUM.
- 6 CONTACT PLATED WITH 0.00013[.000005] GOLD IN CONTACT AREA OVER 0.00127[.000050] NICKEL OVER ALL.



DETAIL A
SCALE 10:1



SECTION B-B
SCALE 10:1

	PHOSPHOR BRONZE	BLACK	<div>9</div>	2-382811-1	<div>4</div>
		BLACK	<div>8</div>	2-382811-0	<div>4</div>
		BLACK	<div>2</div>	1-382811-9	<div>7</div>
		BLACK	<div>6</div>	1-382811-8	<div>7</div>
		RED	<div>2</div>	1-382811-7	<div>4</div>
		BLACK	<div>3</div>	1-382811-6	<div>7</div>
		BLACK	<div>8</div>	1-382811-5	<div>7</div>
		RED	<div>8</div>	1-382811-4	<div>4</div>
		BLUE	<div>8</div>	1-382811-3	<div>4</div>
		BLACK	<div>9</div>	1-382811-2	<div>7</div>
		BLUE	<div>9</div>	1-382811-1	<div>4</div>
OBSOLETE	BERYLLIUM COPPER	BLACK	<div>3</div>	1-382811-0	<div>4</div>
	PHOSPHOR BRONZE	RED	<div>3</div>	382811-9	<div>4</div>
		BLACK	<div>6</div>	382811-8	<div>4</div>
		RED	<div>9</div>	382811-7	<div>4</div>
		BLACK	<div>3</div>	382811-6	<div>4</div>
		BLACK	<div>2</div>	382811-5	<div>4</div>
		BLUE	<div>6</div>	382811-4	<div>4</div>
		RED	<div>6</div>	382811-3	<div>4</div>
		BLUE	<div>3</div>	382811-2	<div>4</div>
		BLUE	<div>2</div>	382811-1	<div>4</div>
CONTACT MATERIAL		HOUSING COLOR	FINISH	PART NO	

THIS DRAWING IS A CONTROLLED DOCUMENT.			DWN W. SORAH 8-18-93	TE Connectivity		
DIMENSIONS: mm [INCHES]			CHK R. TALLEY 8-23-93			
TOLERANCES UNLESS OTHERWISE SPECIFIED:			APVD D. HUFFMAN 8-23-93	NAME		
0 PLC ± -			PRODUCT SPEC	ECONOMY SHUNT ASSEMBLY		
1 PLC ± -			108-1476			
2 PLC ± 0.26 [.010]			APPLICATION SPEC	SIZE CAGE CODE DRAWING NO		
3 PLC ± -			114-1059	A2 00779 C=382811		
4 PLC ± -			WEIGHT -	RESTRICTED TO		
ANGLES ± -			CUSTOMER DRAWING	SCALE 4:1 SHEET 1 OF 1 REV L		
FINISH			SEE TABLE			

Mouser Electronics

Authorized Distributor

Click to View Pricing, Inventory, Delivery & Lifecycle Information:

[TE Connectivity:](#)

[382811-6](#)