

Heterogeneous Modeling and Design

UC Berkeley Project - UT Austin Subcontract



hmad98ucb.fm

Prof. Brian L. Evans

The University of Texas

**Dept. of Electrical and
Computer Engineering**

Major Collaborators:

Gregory E. Allen (ARL)

Dogu Arifler

Niranjan Damera-Venkata

Srikanth Gummadi

Biao Lu

Copyright © 1998, The University of Texas.
All rights reserved.

Real-Time Sonar Beamforming Using Process Networks

Replace Custom Sonar Front-end with a Single Workstation

- Software sonar front-end merges three technologies:
 - symmetric multiprocessing on Unix workstations
 - lightweight POSIX threads (AIX, Irix, HP-UX, Linux, Solaris)
 - Process Network model (concurrency, determinism, boundedness)
- Real-time 4-GFLOP digital interpolation sonar front-end using 16 x 300 MHz **UltraSPARC-II**s: cascade of **1 vertical beamformer** (80 staves, 10 sensors/stave, 100 kHz, 16 bits, 160 MB/s, 3.5 CPUs), **3 horizontal beamformers** (each: 80 staves, 61 beams, 32-bit floats, 32 MB/s, 4 CPUs), and **3 shifters/decimators**
- Workstation reduces weight, volume, development time by factor of two, and

Sonar Front-end	Sonar Manufacturing Cost	Sonar Development Cost
<i>Custom Hardware</i>	\$1,000,000	\$3,000,000
<i>Ultra-2 6000 Server</i>	\$400,000	\$300,000

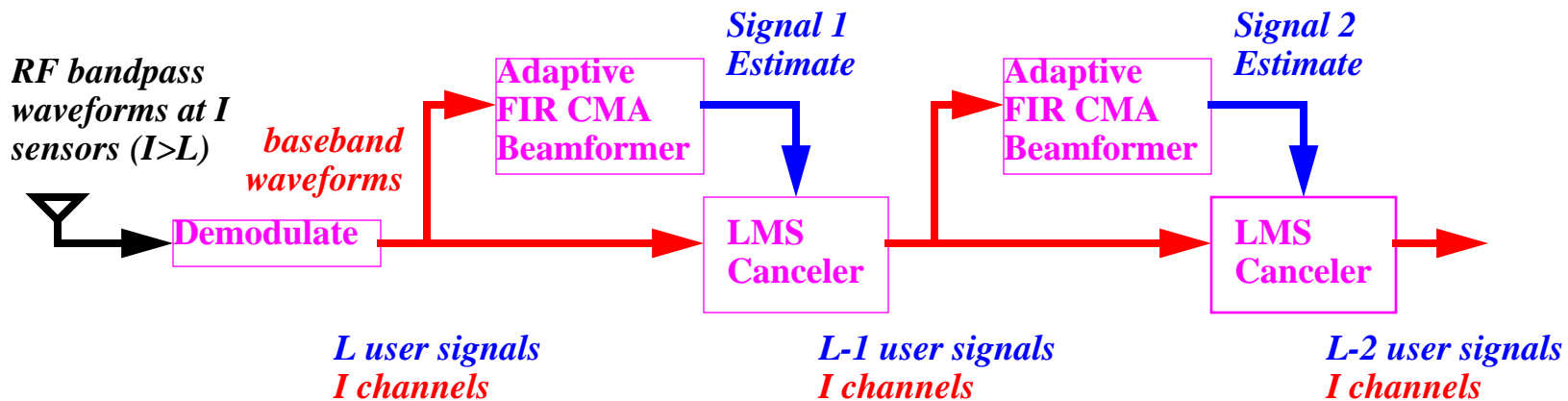
- CAD tools can be **deployed** with the workstation
- Tutorial on Process Networks, beamforming, and Process Network sonar:

<http://www.ece.utexas.edu/~allen/GuestLecture.html>

Smart Antennas for Wireless Communications Systems

Digital Subsystem for a Mixed RF/Analog/Digital System

- Constant Modulus Algorithm (CMA) for blind channel equalization
 - Use I sensors to track L users sending CM signals (QPSK, FSK) where $I > L$
 - Receive narrowband (IS-95, GSM) waveforms from users in the far-field
 - Channel model includes Rayleigh fading; SNR > 10 dB at receiver output

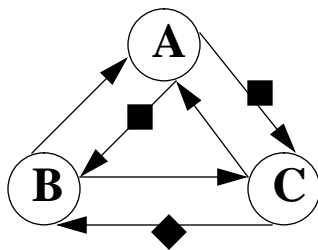


- Embedded real-time implementation in software on a digital signal processor:
 - $2 I L$ adaptive FIR filters + L CMA decisions: $O(L^3)$ multiply/adds
 - Acyclic Homogeneous Synchronous Dataflow (SDF) specifies CMA algorithm
- We make CMA insensitive to channel phase shifts by modifying decision process
- New Ptolemy 0.7.1 simulations (Synchronous Dataflow) and generated C code

Hybrid Neural Network and Signal Processing Systems

Heterogeneous Design Styles & Implementation Technologies

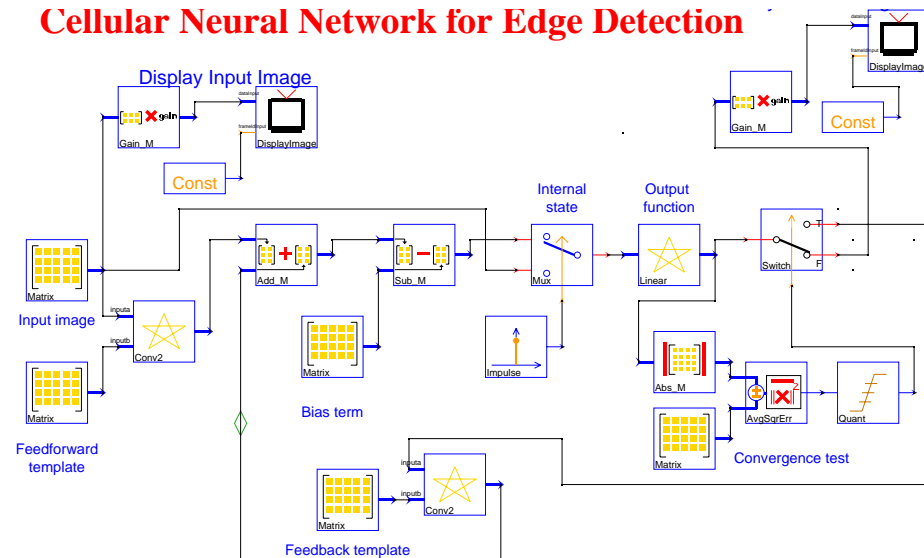
- Use dataflow models to specify hybrid Artificial Neural Network (ANN) and Digital Signal Processing (DSP) systems for simulation and synthesis
 - ANNs during training: Boolean dataflow (BDF)
 - ANNs during classification: Homogeneous Synchronous Dataflow (HSDF), except Cellular Neural Networks require BDF models (w/ static schedules)
- Examples of hybrid ANN and DSP systems
 - Mixture: Gamma Memory Model (add FIR filters on inputs of neurons)
 - ANN followed by DSP: Cellular Neural Network detects impulsive noise in images which is removed by a median filter
- ANN Ptolemy demos under SDF ... Contributions



HSDF Hopfield ANN

hmad98ucb.fm

Cellular Neural Network for Edge Detection

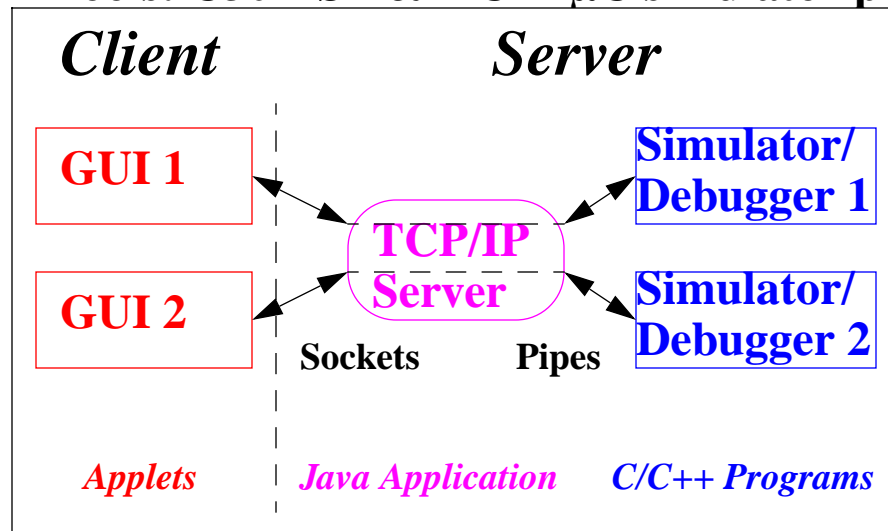


© 1998, p. 4 of 8

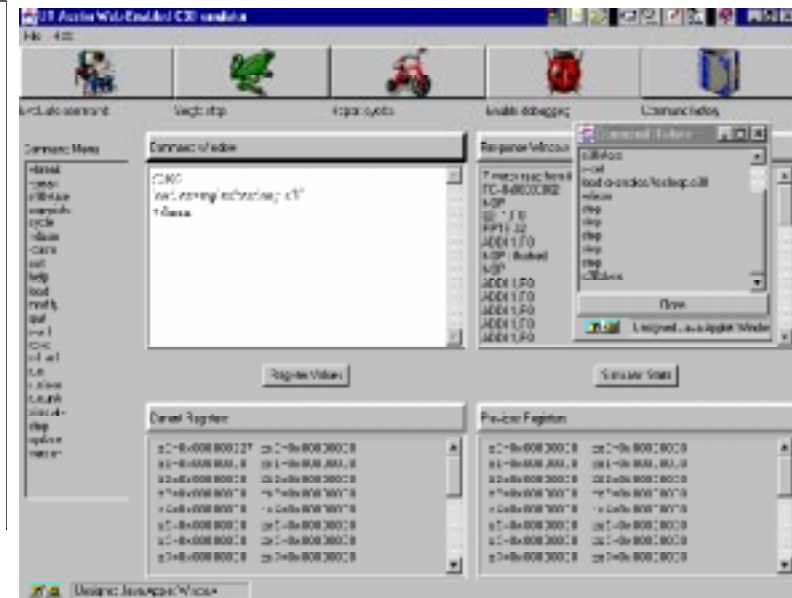
Web-Enabled Simulation of Embedded Software

Evaluate, Benchmark, Develop Embedded Applications

- Immediate access to latest **DSP/microcontroller** simulation & board technology
- **Simulator** applet: generic interface to server for use by other Web CAD tools
- Modern replacement for TechOnLine's telnet interface to DSP boards
 - *portable* - GUI, server, simulators/debuggers work under Unix & Windows
 - *configurable* - GUI customizes appearance based on feedback from tool
 - *extensible* - add command-line simulator/debugger without changing code
- Tools: C30 DSP & HC11 μ C simulator plus MC56800 DSP simulator & board



<http://anchovy.ece.utexas.edu/~arifler/wetics>
hmad98ucb.fm

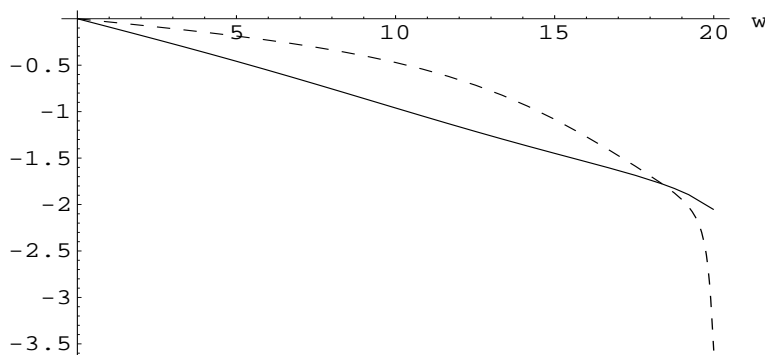


© 1998, p. 5 of 8

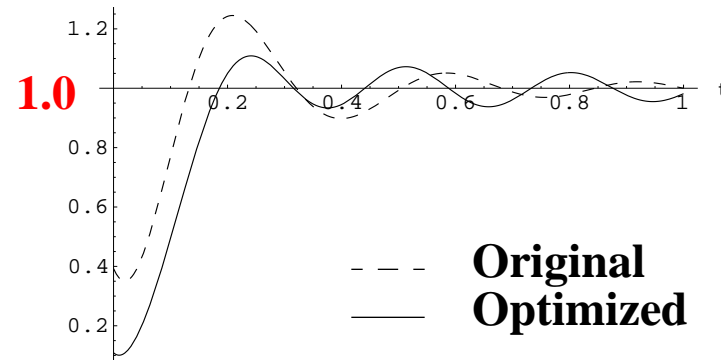
Advanced Filter Design

Automated Multi-Criteria Optimization of Filter Designs

- Optimize behavioral and implementation characteristics
 - Constrained non-linear optimization as Sequential Quadratic Programming: converges to global optimum & robust when closed-form gradients provided.
 - Program **Mathematica** to derive formulas for cost function, constraints, and gradients, and convert the formulas to **Matlab** programs to run optimization.
- Example: Linearize phase and minimize overshoot of an analog elliptic filter design subject to constraints on magnitude, overshoot, and quality factors (Q)



Linearized phase in passband



Minimized peak overshoot

- Constraining Q_{\max} to 10 reduced Q_{\max} from 61 to 10: filter now realizable
- Filter Optimization Packages available for download:

http://www.ece.utexas.edu/~bevans/projects/syn_filter_software.html

Summary - UT Austin Subcontract, Prof. Brian L. Evans

Deliverables

- G. E. Allen, D. C. Schanbacher, and B. L. Evans, “**Real-Time Sonar Beamforming on a Unix workstation Using Process Networks and POSIX Threads**”, **Invited**, *Proc. IEEE Asilomar Conf. on Signals, Systems, and Computers*, Nov. 1-4, 1998.
- S. Gummadi and B. L. Evans, “**Cochannel Signal Separation in Fading Channels Using a Modified Constant Modulus Array**”. **Invited**, *Ibid.*
- A. Kulkarni, A. Dube, and B. L. Evans, “**Benchmarking Code Generation Methodologies for Programmable Digital Signal Processors**”. **Invited**, *Ibid.*
- N. Damera-Venkata, B. L. Evans, M. D. Lutovac, and D. V. Tosic, “**Joint Optimization of Multiple Behavioral and Implementation Properties of Analog Filter Designs**”, *Proc. IEEE Int. Sym. on Circuits and Systems*, May 1998.
- B. Lu, B. L. Evans, and D. V. Tosic, “**Simulation and Synthesis of Artificial Neural Networks Using Dataflow Models in Ptolemy**”, **Invited**, *Proc. IEEE Conf. on Neural Network Applications in Eng.*, Sep. 8-9, 1997, pp. 84-89.
- D. Arifler, C. Duong, B. L. Evans, and S. Gummadi, “**Web-Enabled Texas Instruments TMS320C30 Simulator**,” TI DSP Solutions Contest, Nov. 1997.
- **Software**: N. Damera-Venkata and B. L. Evans, “**Filter Optimization Packages**”.
- **Software**: B. L. Evans, *et al.*, “**Web-Enabled Simulation**”.
- **On-line Courses**: *Embedded Software Systems* and *Real-Time DSP Laboratory*

Personal: <http://www.ece.utexas.edu/~bevans> Lab: <http://anchovy.ece.utexas.edu>

