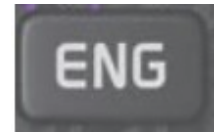


Country _____

1.- All scientific calculators have this key (ENG). What is it for?

___ I don't know, I've never used it.



2.- Scientific calculators have this key [POL or R → P or Pol(]. What is it for?

_____ write an example

___ I don't know, I've never used it.



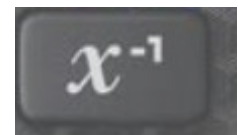
3.- Scientific calculators have this key [REC or P → R or Rec(]. What is it for?

___ I don't know, I've never used it.



4.- Scientific calculators have the (x⁻¹) key, have you ever used it?

___ no ; ___ yes, write an example _____




5.- This image is of a spreadsheet. It is a simple example to calculate the ratio $i = z_{pi}/z_{pi}$. Write in the black rectangle the expression you would use to do the calculation.

	A	B	C	D	E
1					
2		z_{pi}	z_{pi}	i	
3		48	14		
4					
5					

___ I don't know, I've never used a spreadsheet.

6.- The flow diagram (also flowchart) of the figure is a graphic method to visualize the steps to be taken to do a task, in this specific case to calculate a sequence of numbers.

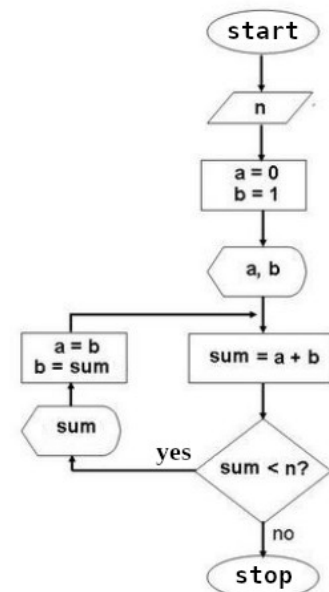
The symbol  means print/visualization and does not affect the calculation.

Step 0 is when you are at the beginning (start).

You have to finish the data sequence from step 0 and write the data sequence from step 1.

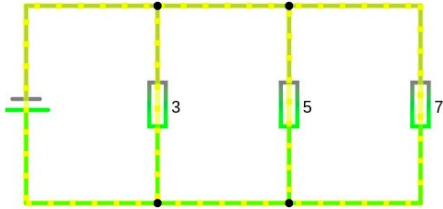
loops	max. value	previous values				new values	
	n	a	b	sum = a+b	sum < n ?	a	b
0	100	0	1				
1	100						

___ I don't know, I've never been taught to read a flowchart.

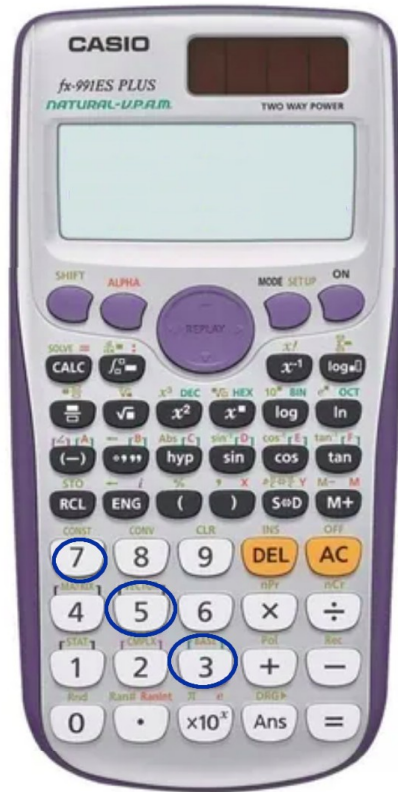


7. The circuit on the left is 3 resistors in parallel of value 3, 5, 7 ohms respectively, in which the total equivalent resistance must be calculated.

Using the calculator image, circle the minimum number of keys which are needed to find the total resistance value. (Keys 3, 5, and 7 are already circled as basic help).



___ I don't know how it's done.



8.- Mark with an X the following programming languages you know, at least at a basic level.

___ C/C++ ___ C# ___ Java ___ JavaScript ___ Python ___ R ___ Fortran

9.- You usually work with Linux, Mac, or Windows. Mark with an X.

___ Linux* ___ Windows ___ Mac

* what kind of distribution

___ Arch ___ Mint ___ Ubuntu ___ Debian ___ other

10.- Which High School did you study in? _____

- Which is your High School GPA? _____